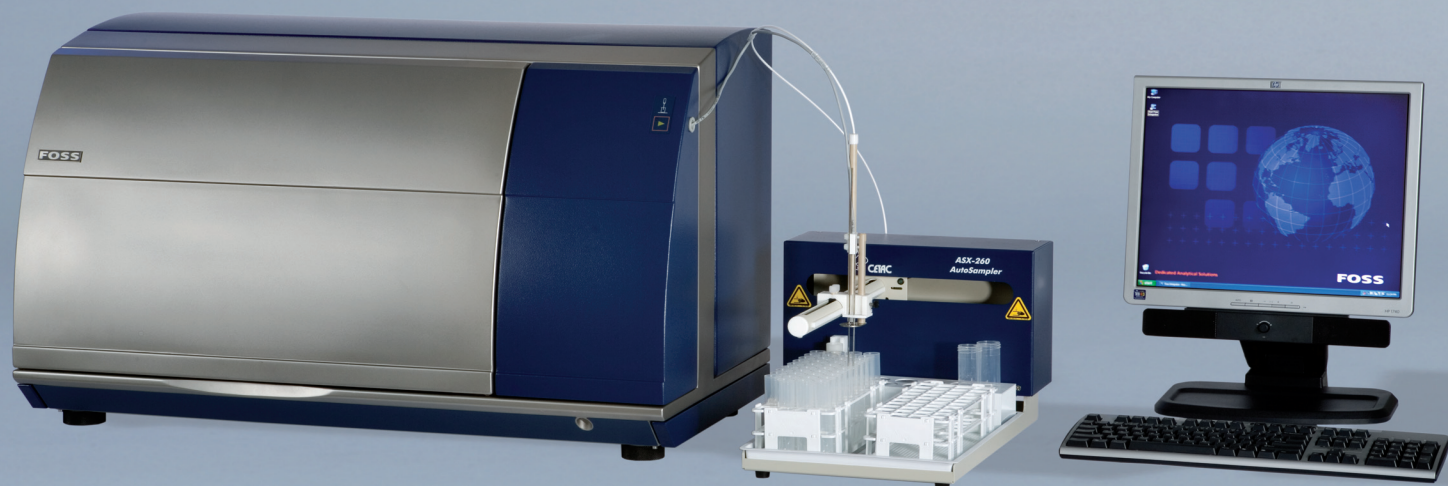


WineScan™ Auto



WineScan™ Auto for analysis of wine quality parameters in 30 seconds

Features and Benefits

- A dedicated solution – WineScan™ Auto is a fast and robust FTIR solution for analysis of main quality parameters in wine
- Major quality parameters are determined in a single analysis
- Low reagent cost per analysis and easy sample preparation
- Ready-made calibrations for wine, must under fermentation and must covering most quality parameters of all major types of wine
- Flexible Foss Integrator Software platform with traceability tools, prediction performance and outlier detection to ensure safe data handling and storage
- Possibility of A_{420} , A_{520} and A_{620} by visual spectroscopy
- The optional WinISI™ III Software package facilitates development of customised calibrations or new parameters

Description

The WineScan Auto is the solution for the busy wine laboratory requiring fast, accurate analysis. Ready-made calibrations allow for the simultaneous analysis of major wine quality parameters.

Sample preparation is easy as no preheating or chemical pretreatment is required. Cost per sample is low as no expensive reagents are needed. The automatic flow system and zero set-

ting function ensure reliable and consistent results.

The WineScan Auto analyses main product components such as Ethanol, pH, sugars, and organic acids in wine and must under fermentation. The wine samples in the calibrations represent red, white and rose wines, which gives you a reliable and robust calibration.

See application notes for up-to date and detailed information about available calibrations.

Technology

The WineScan Auto has a FTIR (Fourier Transform Infrared Spectroscopy) interferometer that scans the full infrared spectrum. Collection of data from the entire spectrum allows you to analyse many parameters. Analysing new parameters is only a matter of calibration development.

System Description

The WineScan Auto consists of the Analyser, XY Auto Sampler and Foss Integrator software. The personal computer is not included.

Options for WineScan Auto include the possibility to upgrade to manual sample intake and colour (VIS) module.

Performance data

The following calibration package is included:

Wine calibration: Ethanol, Glucose/Fructose, Malic Acid, Volatile Acid, Total Acid, pH.

More calibrations are available. A large number of components can be analysed simultaneously, and the number of measure profiles that can be set-up is unlimited.

Analysis time:	30 seconds
Carry-over:	< 1%
Sample Temperature:	5-35°C
Sample Volume:	Programmable 4 - 25 ml, standard volume is 8 ml.
Optical System:	Hermetically sealed, humidity control.
Cleaning:	Automatic and programmable.
Calibration routines:	Slope & Intercept Adjustment.
Options in WinISI™ SW package:	PLS (Partial Least Squares) and modified PLS calibrations and PCA (Principal Component Analysis). Flexible selection of spectral intervals.

Standards and Approvals

WineScan™ Auto is CE labelled and complies with the following directives:

- EMC Directive 89/336/EC and amendments
EN 61000-6-3
EN 61000-6-2
- Low voltage directive 73/23/EC and amendments
EN/IEC 61010-1 version 2
- Classification, packaging and labelling of dangerous preparations directive 99/45/EC and amendments
- Packaging and packaging waste directive 94/62/EC
- Directive on waste electrical and electronic equipment (WEEE)
- Food and Drug Administration (FDA), Title 21, CFR, chapter J

Installation requirements

WineScan™ Auto

Power supply:	100-240 VAC ±10% – 50-60 Hz
Power consumption:	Max. 500 VA during measurement, 150 VA in standby
Ambient temperature:	5 - 40°C
Ambient humidity:	< 80% RH, cyclic up to 93% RH when going from low to high ambient temperature
Weight:	94 kg
Dimensions (H×W×D):	54×88×47.3 cm (excl. PC)
Environment:	For best performance, place the instrument on a stable surface away from excessive and continuous vibration.
Degree of protection:	IP43 IP43 PC is optional
Noise Level:	< 70 dB
Fuse:	T 10.0 A
Installation category:	II
Pollution degree:	2
Altitude:	≤ 2000 m

Technical Specifications

XY Auto Sampler

Power supply:	100-240 VAC ±10% – 50-60 Hz
Weight:	8.4 kg
Dimensions (H×W×D):	61×33×50.8 cm (with sample probe)

PC Requirements (Minimum)

- 1 GHz CPU speed (minimum)
- 512 MB RAM (Emulator: 256 MB)
- 3 GB free disk space (Emulator: 1GB)
- SVGA at 1024*768, min. 16bit colours
- Windows® XP (Emulator can run on Windows® 2000)
- Microsoft® office
- CD drive
- 2 USB Ports
- Mouse/trackball
- Windows-based printer

FOSS

FOSS Analytical
69, Slangerupgade
DK-3400 Hilleroed
Denmark

Tel.: +45 7010 3370
Fax: +45 7010 3371

info@foss.dk
www.foss.dk