



Forever better.  
In every detail.

Miele Professional  
Dishwasher Product Range

**Miele**  
PROFESSIONAL





**Miele**  
PROFESSIONAL



Miele Professional, the leading manufacturer of high-quality cleaning equipment, continues to raise the bar with a new generation of technologically advanced fresh water commercial dishwashers that are not only faster, but also provide exceptional cleaning performance and functionality.

German engineered to achieve flawless results every time, Miele Professional dishwashers are available in two distinct product lines to accommodate a wide variety of customer preferences.

**ProfiLine Series** – Designed with the look and feel of a residential dishwasher, these models provide the speed and durability of commercial systems. The ProfiLine Series is perfect for environments where running several cycles per day is required, including homes, break rooms and offices.

**Professional Series** – The world's fastest fresh water commercial dishwashers offer a sleek new look, advanced cleaning technology and a flexible design that meets the requirements of various industries, including restaurants, wineries and senior care facilities. The Professional Series is designed to run continuously throughout the day and meets the highest sanitization requirements.

### The Miele Difference at a Glance

#### Efficiency

- Fast cycle times as short as 6 minutes
- Commercial performance in a 24" residential footprint
- Large capacity and flexible multi-level cleaning

#### Cleaning Results

- Fresh water system
- Specialized programs e.g. China & Crystal, Sanitize
- High performance circulation pump for a gentle, powerful clean
- Built-in water softener

#### Quality

- German engineered to last 15,000 operating hours
- Recommended for up to 40 cycles per day
- High grade stainless steel construction



*Miele manufactures the only dishwashers that are exclusively recommended by the legendary stemware company Riedel.*



## ProfiLine Dishwashers

Miele ProfiLine commercial grade dishwashers combine short cycle times, superior cleaning performance and ease of use. The polished, user friendly design makes these dishwashers the perfect fit for busy spaces in homes and offices where many people are using the machine on a daily basis. ProfiLine dishwashers can run up to five cycles per day and can be fitted with a stainless steel door panel or a custom panel to fit any cabinetry, providing a seamless, sleek look.

### Professional and Versatile

Ideal for environments in both office settings and private households where many users load the dishwasher and a variety of different items are being cleaned daily.

### High Energy Efficiency

ProfiLine programs are designed to reduce water and energy consumption.

### Short Program Cycles

With a program cycle lasting 25 minutes or less, ProfiLine dishwashers are extremely fast and provide reliable results.

### Convenience Features

The door automatically opens at the end of the program, providing superior drying. Dishes cool off faster, enabling safe handling.





The PG 8080i offers professional speed and performance in a residential footprint. This model is ADA compliant and is ideal for office spaces, break rooms, and homes where fast cycle times are desired.



### PG 8080i

- ADA compliant
- 9 programs
- Fastest cycle: 24 minutes
- Integrated, CleanTouch Steel™ door panel
- AutoOpen Dry
- Perfect GlassCare system
- Standard baskets hold 13 place settings

The PG 8083 SCVi is Miele's top of the line, fully integrated dishwasher ideal for private households that routinely entertain. This dishwasher has completely hidden controls and can support custom cabinetry for a sleek and custom look in a kitchen.



### PG 8083 SCVi

- 9 programs
- Fastest cycle: 25 minutes
- Fully integrated
- 3D cutlery tray
- Sensor Dry
- Brilliant Light
- AutoOpen Dry
- Perfect GlassCare system
- Standard baskets hold 16 place settings
- Complimentary 5 year warranty



## Professional Dishwashers

Miele offers the world's fastest fresh water commercial dishwashers which provide impeccable cleaning results, user friendliness, unmatched performance and a fresh new design. The PG 8056 and PG 8061 can run up to 40 cycles per day and can accommodate a wide variety of baskets and inserts, including standard caterers' baskets. Both models are ADA compliant and are exclusively recommended by Riedel. The PG 8061 is ideal wherever sanitization is required, including wineries, inns, senior care spaces, community kitchens, schools and restaurants.

### Designed To Last

The new PG 8056 and PG 8061 fresh water dishwashers are designed to last at least 15,000 operating hours. If used six times a day, six days a week, the dishwasher will last more than 13 years.

### Efficiency

Both dishwashers have the ability to run up to 40 cycles per day and offer rapid cycle times; 6 minutes for the PG 8056 and 15 minutes for the PG 8061. Two level cleaning provides improved capacity for even better efficiency.

### Cleaning Performance

Three spray arms produce fan shaped jets of water for better cleaning performance and reduced water consumption. The variable-speed heater-pump provides perfect pump pressure during all program steps for flawless cleaning results.

### Flexibility

Miele's Professional dishwashers can be customized to fit various types of glassware, plates and other dishware to accommodate many applications. The PG 8056 and PG 8061 can be used with Miele's standard inserts and baskets as well as commercial plastic baskets. These dishwashers can even be converted to a standalone unit.





## Professional Dishwashers

*Standard basket configuration:*

The PG 8056 is Miele's fastest dishwasher and is the perfect solution for offices and homes that desire fast turnaround and high throughput.



### PG 8056

- Ideal for the home or office
- ADA compliant
- Fastest cycle: 6 minutes
- 10 programs
- Standard basket configuration: U 890 with 2 x E 816 and 2 x E 165, O 891 with 1 x E 810
- Large variety of baskets and inserts available (see pages 6-12)

The PG 8061 is the ideal dishwasher for applications where sanitization is important. The three standard programs have a final rinse temperature of 185° F and a one minute holding time to provide safe sanitization without the use of caustic chemicals.

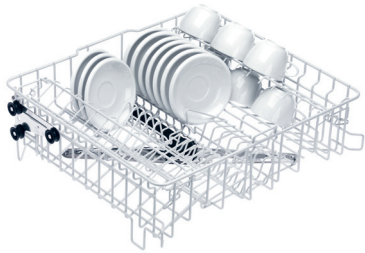


### PG 8061

- NSF pending
- ADA compliant
- Fastest cycle: 15 minutes
- 3 programs
- AutoOpen drying
- AutoClose door
- Steam condenser
- Standard basket configuration: U 890 with 2 x E 816 and 2 x E 165, O 891 with 1 x E 810
- Large variety of baskets and inserts available (see pages 6-12)



## Upper and Lower Baskets/Basket Carriers



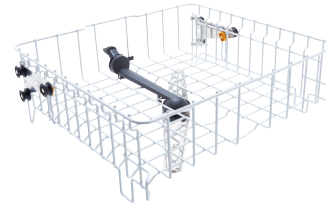
**O 891 Upper Basket with E 810 \***  
67189101D

- Plastic-coated wire basket
- Integrated spray arm, rear docking
- 2 hinged cup racks for 20 cups
- 2-stage height adjustment by 2"
- Vertical clearance 7<sup>7</sup>/<sub>8</sub>"
- 7<sup>1</sup>/<sub>2</sub>" H x 20<sup>1</sup>/<sub>2</sub>" W x 19<sup>1</sup>/<sub>4</sub>" D



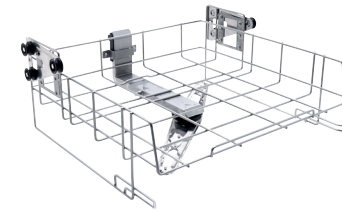
**O 892 Upper Basket**  
67189201D

- With E 812 and 2 glass rails
- Plastic-coated wire basket
- Integrated spray arm, rear docking
- Vertical clearance 7<sup>7</sup>/<sub>8</sub>"
- 7<sup>1</sup>/<sub>2</sub>" H x 20<sup>1</sup>/<sub>2</sub>" W x 19<sup>1</sup>/<sub>4</sub>" D



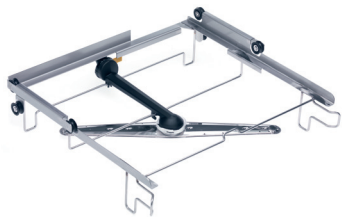
**O 899 Upper Basket Carrier**  
67189901D

- Plastic-coated wire basket
- Integrated spray arm, rear docking
- 2-stage height adjustment by 2"
- Vertical clearance 7<sup>7</sup>/<sub>8</sub>"
- 7<sup>1</sup>/<sub>2</sub>" H x 20<sup>1</sup>/<sub>2</sub>" W x 19<sup>1</sup>/<sub>4</sub>" D



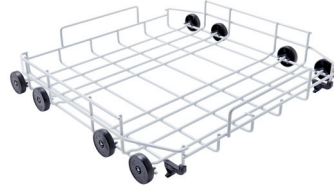
**O 898 Upper Basket**  
67189801D

- For PG 8061
- Stainless steel
- Integrated spray arm, rear docking
- Height adjustable by 2<sup>3</sup>/<sub>8</sub>"
- Vertical clearance 9<sup>1</sup>/<sub>2</sub>"
- 8<sup>1</sup>/<sub>8</sub>" H x 20<sup>3</sup>/<sub>4</sub>" W x 19<sup>1</sup>/<sub>2</sub>" D



**O 885 Upper Basket Carrier**  
67188501D

- Stainless steel
- Integrated spray arm, rear docking
- For 19<sup>3</sup>/<sub>4</sub>" x 19<sup>3</sup>/<sub>4</sub>" baskets
- Vertical clearance 5<sup>1</sup>/<sub>8</sub>"
- 4<sup>3</sup>/<sub>4</sub>" H x 20<sup>7</sup>/<sub>8</sub>" W x 20<sup>3</sup>/<sub>8</sub>" D



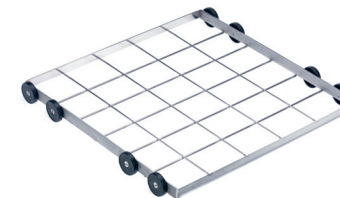
**U 890 Lower Basket \***  
67189001D

- Plastic-coated wire basket
- For inserts or plastic baskets, sized 19<sup>3</sup>/<sub>4</sub>" x 19<sup>3</sup>/<sub>4</sub>"
- 4" H x 21" W x 20<sup>3</sup>/<sub>8</sub>" D



**U 881 Lower Basket**  
4906620

- Plastic-coated wire basket
- Fixed insert for 54 saucers
- For combination with E 809 top insert for 23 cups with 3<sup>5</sup>/<sub>8</sub>" diameter
- 7<sup>7</sup>/<sub>8</sub>" H x 20<sup>7</sup>/<sub>8</sub>" W x 20<sup>3</sup>/<sub>8</sub>" D



**U 876 Lower Basket Carrier**  
67187501D

- Stainless steel
- For baskets and various inserts, sized 19<sup>3</sup>/<sub>4</sub>" x 19<sup>3</sup>/<sub>4</sub>"
- Vertical clearance 9<sup>1</sup>/<sub>8</sub>"\*\*
- 2" H x 21<sup>1</sup>/<sub>8</sub>" W x 19<sup>3</sup>/<sub>4</sub>" D

\*\* With O 885 upper basket carrier

\* Standard basket



# Inserts for Upper and Lower Baskets



**E 816 Plate Insert \***  
67581601D

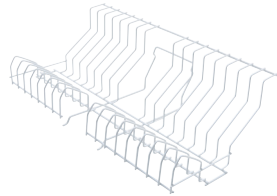
- Plastic-coated wire basket
- For use in U 890 lower basket
- 2 positions possible:

*Load arrangement without cutlery holder*

- For 19 plates with 9<sup>7</sup>/<sub>8</sub>" diameter
- For 19 plates with 13" diameter

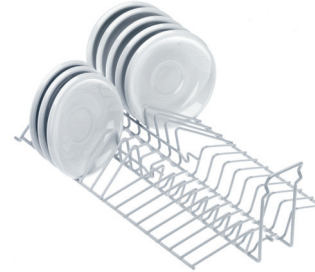
*Load arrangement with cutlery holder*

- For 16 plates with 9<sup>7</sup>/<sub>8</sub>" diameter
- For 16 plates with 13" diameter



**E 216 Plate Insert**  
3809080

- Plastic-coated wire basket
- For use in lower baskets
- For 15 plates with 9<sup>1</sup>/<sub>2</sub>" diameter
- Accommodates E 165 cutlery holder



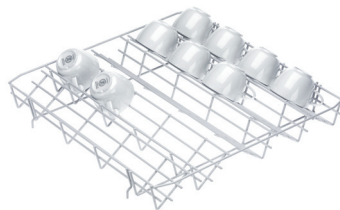
**E 810 Plate Insert \***  
67581001D

- Plastic-coated wire basket
- For use in O 891 upper basket
- 33 saucers or 17 dessert plates



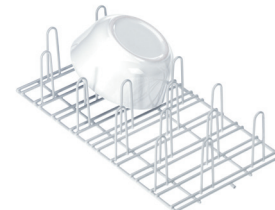
**E 888 Plate Insert**  
5018690

- Plastic-coated wire basket
- For use in U 890 lower basket
- For 9 plates with 14<sup>1</sup>/<sub>4</sub>" diameter or 18 plates with 11<sup>7</sup>/<sub>8</sub>" diameter
- Rests spaced 1<sup>1</sup>/<sub>8</sub>" apart
- Rest height 7"
- 7" H x 18<sup>1</sup>/<sub>8</sub>" W x 18<sup>1</sup>/<sub>8</sub>" D



**E 809 Lower Basket Top Insert**  
5018650

- Plastic-coated wire basket
- For use in U 881 lower basket
- For 23 cups with 3<sup>5</sup>/<sub>8</sub>" diameter
- 2<sup>7</sup>/<sub>8</sub>" H x 20" W x 19<sup>1</sup>/<sub>2</sub>" D



**E 9 Insert**  
3808260

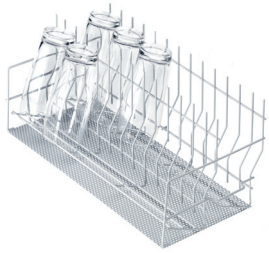
- Plastic-coated wire basket
- For use in U 890 and U 876 lower baskets
- For pots and pans, bowls and dishes
- Rests spaced 1<sup>7</sup>/<sub>8</sub>" apart
- Rest height 4<sup>1</sup>/<sub>4</sub>"
- 4<sup>5</sup>/<sub>8</sub>" H x 8<sup>7</sup>/<sub>8</sub>" W x 16<sup>1</sup>/<sub>2</sub>" D



**E 884 Insert**  
5018680

- Plastic-coated wire basket
- For use in U 890 lower basket
- For 10 large trays or platters, max. size 19<sup>3</sup>/<sub>4</sub>" x 12<sup>5</sup>/<sub>8</sub>"
- Rests spaced 1<sup>1</sup>/<sub>4</sub>" apart
- Rest height 7"
- 7" H x 18<sup>1</sup>/<sub>8</sub>" W x 18<sup>1</sup>/<sub>8</sub>" D

# Inserts for Upper and Lower Baskets



**E 205 Glassware Insert**  
3808980

- Plastic-coated wire basket
- For use in lower baskets
- For 17 glasses with 2 5/8" diameter
- Rest height 8 3/4"
- Perforated plate to reduce impact of water jets
- Max. glass height 10 3/4"
- 8 3/4" H x 9 5/8" W x 19 1/2" D



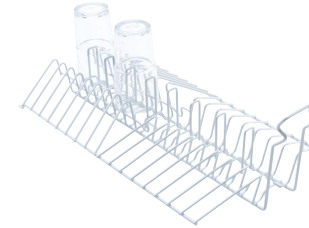
**E 459 Glassware Insert**  
4326630

- Stainless steel
- For use in upper or lower baskets
- For 12 glasses with 2 3/4" diameter
- Max. glass height 8 3/4"
- 6 3/4" H x 7 7/8" W x 18 1/8" D



**E 815 Glassware Insert**  
5018670

- Plastic-coated wire basket
- For use in U 890 lower basket
- For 10 beer glasses
- Rests spaced 3 3/4" apart
- Rest height 9 1/2"
- 10" H x 8 3/4" W x 20 1/4" D



**E 812 Glassware Insert**  
67581201D

- Plastic-coated wire basket
- For use in upper baskets
- For 7 glasses with 2 3/8" diameter



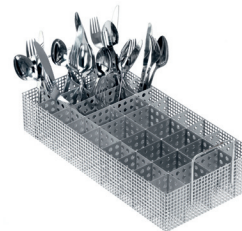
**E 165 Cutlery Holder \***  
3808830

- Plastic holder
- For use in E 816 insert
- 3 compartments
- 4 3/8" H x 2 3/4" W x 8 5/8" D



**E 167 Cutlery Holder**  
67616701D

- Plastic holder
- For use in U 506 plate basket
- 7 compartments
- 4 1/4" H x 17 3/8" W x 2" D



**E 437 Cutlery Insert**  
4326640

- Stainless-steel container with carrying handle
- For use in O 885 upper basket carrier and U 876 lower basket carrier
- 18 compartments sized 2 3/8" x 1 3/4"
- 2 compartments sized 2 3/8" x 2 3/8"
- 16 compartments sized 1 3/4" x 1 3/4"
- 2 3/4" H x 8 3/8" W x 17 1/4" D



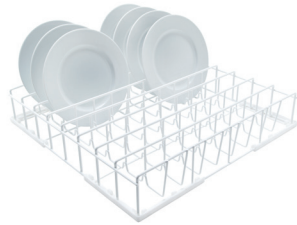
## Lower Baskets\*

---



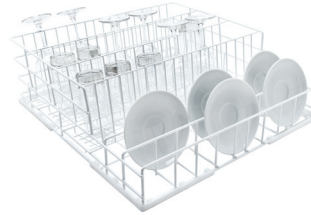
**U 504 Cutlery Basket**  
67650401D

- Plastic-coated wire basket
- Plastic cutlery holder
- 9 compartments sized 4 1/4" x 4 1/4"
- 5 3/4" H x 19 3/4" W x 19 3/4" D



**U 506 Plate Basket**  
67650601D

- Plastic-coated wire basket
- 8 rows
- Rests spaced 2 1/8" apart
- Accommodates E 167 cutlery holder
- 3 5/8" H x 19 3/4" W x 19 3/4" D



**U 507 Bistro Basket**  
67650701D

- Plastic-coated wire basket
- Spacing (tall) 3 5/8" or 4" or 3 7/8"
- Spacing (low) 2 1/8" or 2 1/2"
- 6 1/2" H x 19 3/4" W x 19 3/4" D



**U 524/1 Glassware Basket**  
10094770

- Plastic-coated wire basket
- 4 rows for glasses with 4" diameter
- 7 1/4" H x 19 3/4" W x 19 3/4" D



**U 525/1 Glassware Basket**  
10094780

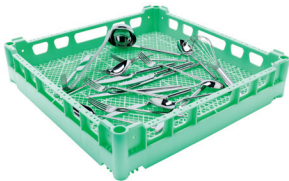
- Plastic-coated wire basket
- 5 rows for glasses with 3 1/4" diameter
- 7 1/4" H x 19 3/4" W x 19 3/4" D

# Universal Baskets\*



**U 502 Plate Basket**  
67650201D

- Plastic basket
- 6 or 9 rows
- Rests spaced 2<sup>3</sup>/<sub>4</sub>" or 1<sup>7</sup>/<sub>8</sub>"
- 4<sup>3</sup>/<sub>8</sub>" H x 19<sup>3</sup>/<sub>4</sub>" W x 19<sup>3</sup>/<sub>4</sub>" D



**U 503 Cutlery Basket**  
67650301D

- Plastic basket
- Suitable for ice-cream bowls
- Narrow-mesh base
- 4<sup>3</sup>/<sub>8</sub>" H x 19<sup>3</sup>/<sub>4</sub>" W x 19<sup>3</sup>/<sub>4</sub>" D



**U 505 Multi-Purpose Basket**  
67650501D

- Plastic basket
- Interior height 6<sup>3</sup>/<sub>8</sub>"
- Coarse-mesh base
- 7<sup>3</sup>/<sub>4</sub>" H x 19<sup>3</sup>/<sub>4</sub>" W x 19<sup>3</sup>/<sub>4</sub>" D



**U 508 Cup Basket**  
67650801D

- Plastic basket
- 4 rows for cups with 4" diameter
- 4<sup>1</sup>/<sub>8</sub>" H x 19<sup>3</sup>/<sub>4</sub>" W x 19<sup>3</sup>/<sub>4</sub>" D



**U 520 Glassware Basket**  
67652001D

- Plastic basket
- 36 compartments sized 2<sup>7</sup>/<sub>8</sub>" x 2<sup>7</sup>/<sub>8</sub>"
- 4<sup>1</sup>/<sub>8</sub>" H x 19<sup>3</sup>/<sub>4</sub>" W x 19<sup>3</sup>/<sub>4</sub>" D



**U 313/2 Basket for Trays**  
67631305D

- Plastic basket with pre-fitted skids
- Insert for 10 trays sized 20<sup>1</sup>/<sub>2</sub>" x 11<sup>1</sup>/<sub>2</sub>"
- Rests spaced 1" apart
- Rest height 16<sup>3</sup>/<sub>8</sub>"
- 7<sup>1</sup>/<sub>8</sub>" H x 20<sup>7</sup>/<sub>8</sub>" W x 19<sup>5</sup>/<sub>8</sub>" D

## Basket Combinations

	Plate Basket	Cutlery Basket	Multi-Purpose Basket	Cup Basket	Tray Basket	Glassware Baskets			Max. Vertical Clearance of Dishware
	U 502	U 503	U 505	U 508	U 313/2	U 520	U 534 - U 537	U 544 - U 547	
Upper Basket Carrier O 885	X	X		X		X			5 <sup>1</sup> / <sub>8</sub> "
Lower Basket Carrier U 876	X	X	X	X	X	X	X	X	9 <sup>1</sup> / <sub>8</sub> "
Lower Basket U 890	X	X	X	X	X	X	X		7 <sup>7</sup> / <sub>8</sub> "

\* Use with O 885, U 876 or U 890



# Glassware Baskets\*

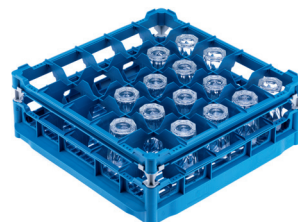
## Low Top Frame



### U 534 Glassware Basket

67653401D

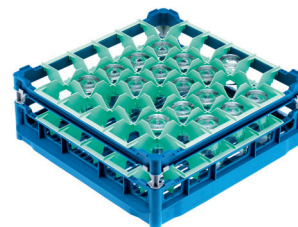
- Plastic basket
- For 16 glasses with 4 1/2" diameter
- Compartments sized 4 1/2" x 4 1/2"
- Basket sized 4 1/8" or 6 7/8" or 9 1/4" H x 19 3/4" W (20 7/8" incl. side runners) x 19 3/4" D



### U 535 Glassware Basket

67653501D

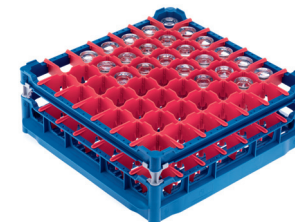
- Plastic basket
- For 25 glasses with 3 5/8" diameter
- Compartments sized 3 5/8" x 3 5/8"
- Basket sized 4 1/8" or 6 7/8" or 9 1/4" H x 19 3/4" W (20 7/8" incl. side runners) x 19 3/4" D



### U 536 Glassware Basket

67653601D

- Plastic basket
- For 36 glasses with 2 7/8" diameter
- Compartments sized 2 7/8" x 2 7/8"
- Baskets sized 4 1/8" or 6 7/8" or 9 1/4" H x 19 3/4" W (20 7/8" incl. side runners) x 19 3/4" D

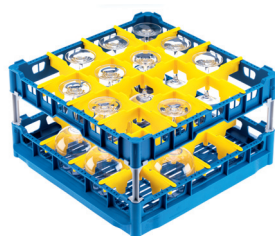


### U 537 Glassware Basket

67653701D

- Plastic basket
- For 49 glasses with 2 1/2" diameter
- Compartments sized 2 1/2" x 2 1/2"
- Baskets sized 4 1/8" or 6 7/8" or 9 1/4" H x 19 3/4" W (20 7/8" incl. side runners) x 19 3/4" D

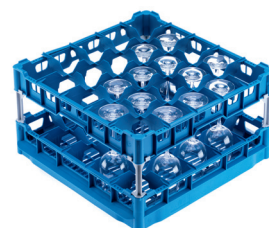
## High Top Frame



### U 544 Glassware Basket

67654401D

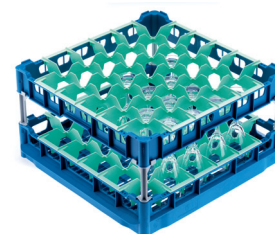
- Plastic basket
- For 16 glasses with 4 1/2" diameter
- Compartments sized 4 1/2" x 4 1/2"
- Basket sized 4 1/8" or 6 7/8" or 9 1/4" H x 19 3/4" W (20 7/8" incl. side runners) x 19 3/4" D



### U 545 Glassware Basket

67654501D

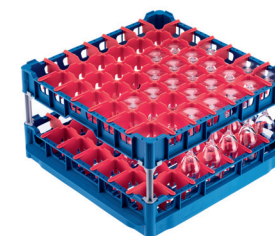
- Plastic basket
- For 25 glasses with 3 5/8" diameter
- Compartments sized 3 5/8" x 3 5/8"
- Basket sized 4 1/8" or 6 7/8" or 9 1/4" H x 19 3/4" W (20 7/8" incl. side runners) x 19 3/4" D



### U 546 Glassware Basket

67654601D

- Plastic basket
- For 36 glasses with 2 7/8" diameter
- Compartments sized 2 7/8" x 2 7/8"
- Baskets sized 4 1/8" or 6 7/8" or 9 1/4" H x 19 3/4" W (20 7/8" incl. side runners) x 19 3/4" D



### U 547 Glassware Basket

67654701D

- Plastic basket
- For 49 glasses with 2 1/2" diameter
- Compartments sized 2 1/2" x 2 1/2"
- Baskets sized 4 1/8" or 6 7/8" or 9 1/4" H x 19 3/4" W (20 7/8" incl. side runners) x 19 3/4" D

\* For use with O 885, U 876 or U 890

## Accessories

---



**ABL 50 Spacer Trim**  
67211401D

- Stainless steel
- Allows height adjustment to 28 $\frac{3}{8}$ " cabinet size
- Height 2"



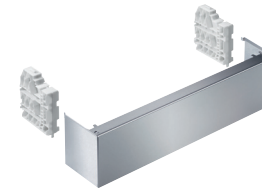
**UO 30-60/80 Base**  
67376103D

- Stainless steel
- Open base
- Can be bolted to machine
- 11 $\frac{7}{8}$ " H x 23 $\frac{5}{8}$ " W x 23 $\frac{5}{8}$ " D



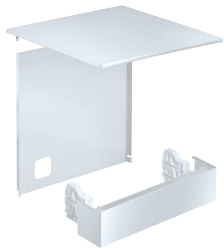
**UG 30-60/80 Base**  
67376104D

- Stainless steel
- Closed base
- Can be bolted to machine
- 11 $\frac{7}{8}$ " H x 23 $\frac{5}{8}$ " W x 23 $\frac{5}{8}$ " D



**Base Conversion Kit**  
67211605D

- Stainless steel
- Non-continuous fascia with 2 brackets
- 5 $\frac{5}{8}$ " H x 23 $\frac{5}{8}$ " W x 5" D



**1-80 Conversion Kit**  
67211603D

- Stainless steel
- Base fascia with 2 brackets, lid and rear panel to convert standard unit into freestanding unit



**DOS G80/1 Dosing Module**  
67747025USA

- Dispenser module for liquid detergent
- 2 AC 208V 60Hz / 2 AC 240V 60Hz
- 7 $\frac{7}{8}$ " siphon for 5 liter canister
- Container empty indicator



## Product Overview

Model	PG 8080i		PG 8083 SCVi		PG 8056		PG 8061	
<b>Design</b>								
Style	Undercounter		Undercounter		Undercounter		Undercounter	
Freestanding Conversion Kit					Optional		Optional	
Baskets	MaxiComfort		MaxiComfort		U 890 with 2 x E 816 and 2 x E 165, O 891 with 1 x E 810		U 890 with 2 x E 816 and 2 x E 165, O 891 with 1 x E 810	
Commercial Dish Racks					Optional		Optional	
Cutlery	Cutlery Basket		3D Cutlery Tray		Cutlery Holder		Cutlery Holder	
Door Panel	Integrated, CleanTouch Steel™*		Fully Integrated, Custom Panel**		Stainless Steel		Stainless Steel	
<b>Performance Features</b>								
Fastest Cycle (240V)	24 mins		25 mins		6 mins		15 mins	
Max. Number of Recommended Cycles/Day	5		5		40		40	
Number of Programs	9		9		10		3	
<b>Convenience Features</b>								
AutoClose/ComfortClose	•		•				•	
AutoOpen	•		•				•	
EasyOpen					•			
BrilliantLight			•					
Delay Start	•		•		•		•	
Automatic Liquid Detergent Dispenser Pump					Optional		Optional	
<b>Cleaning Features</b>								
Recirculated Turbothermic Drying	•		•					
Condenser/Auto Open Drying							•	
Built-In Water Softener	•		•		•		•	
Perfect GlassCare	•		•		•			
<b>Safety Features</b>								
Spray Arm Monitoring	•		•					
Double WaterProof System	•		•		•		•	
<b>Approvals, Certifications and Compliance</b>								
ADA Compliant	•				•		•	
NSF Certified							Pending	
Riedel Exclusively Recommends	•		•		•		•	
<b>Technical Data</b>								
Dimensions	32" H x 24" W x 23" D		33" H x 24" W x 23" D		33" H x 24" W x 23" D		33" H x 24" W x 24" D	
Weight	130 lbs		134 lbs		154 lbs		160 lbs	
Water Connection	1 (hot or cold water)		1 (hot or cold water)		2 (1 hot and 1 cold water)		3 (1 hot and 2 cold water)***	
Noise Emission	49 db		49 db		59 db		57 db	
<b>Electrical Requirements</b>								
Model Number	61808052USA	61808051USA	61808365USA	61808366USA	61805650USA	61805655USA	61806120USA	61806125USA
Voltage	AC 120V	2N AC 208-240V	AC 120V	2N AC 208-240V	2 AC 208V	2 AC 240V	3 AC 208V (conv. 2 AC 208V)	3 AC 240V (conv. 2 AC 240V)
Rated Load	1.3 kW	5.0 kW	1.3 kW	5.0 kW	5.8 kW	5.8 kW	5.8 kW	5.8 kW
Circuit Breaker	15 A	30 A	15 A	30 A	30 A	30 A	3 x 20 A (30 A)	3 x 20 A (30 A)
Plug	NEMA 5-15 P	NEMA 14-30 P	NEMA 5-15 P	NEMA 14-30 P	NEMA L6-30	NEMA L6-30	NEMA L15-20 (NEMA L6-30)	NEMA L15-20 (NEMA L6-30)
<b>Applications</b>								
	Homes, offices, nursing homes, community kitchens		Residential kitchens, which prefer a fast commercial grade dishwasher		Homes, offices, butler's pantry, where NSF is not required - spas, test kitchens, inns		Wineries, schools, nursing homes	
<b>Other</b>								
Complimentary 5 Year Warranty			•					

\*Panel must be ordered separately    \*\*Panel and handle must be ordered separately    \*\*\*Use supplied Y-connector if only one cold water connection is available





# Experience Miele

If you'd like to see our products in action or speak to our experts about the right solution for your needs, visit one of the Miele Experience Centers located throughout the country. Here, we will guide you through the product range and give you the advice you need to select the unit that is right for your application.

When you visit a Miele Experience Center, you will be able to view results first-hand and see the difference Miele can make. Contact us to book an appointment.

## For inquiries, please contact:

Miele Professional  
9 Independence Way  
Princeton, NJ 08540

☎ 800-991-9380  
☎ 609-419-4241  
🌐 [miele-pro.com](http://miele-pro.com)  
✉ [proinfo@mieleusa.com](mailto:proinfo@mieleusa.com)

## Miele Experience Centers

Beverly Hills, CA  
Boca Raton, FL  
Chicago, IL  
Dallas, TX  
Miami, FL (Fall 2015)  
New York, NY  
Princeton, NJ  
San Francisco, CA  
Seattle, WA  
Scottsdale, AZ  
Tysons Corner, VA  
Wellesley, MA

Miele Professional reserves the right to change the machines and specifications at anytime, without any prior notice. All information printed is only for information and never legally binding.